

FWP'S All Taxa Early Detection and Monitoring Program 2020 Season Update

Craig McLane
AIS Monitoring Coordinator

cmclane@mt.gov

406-438-2592



New for 2020 - Dive Team

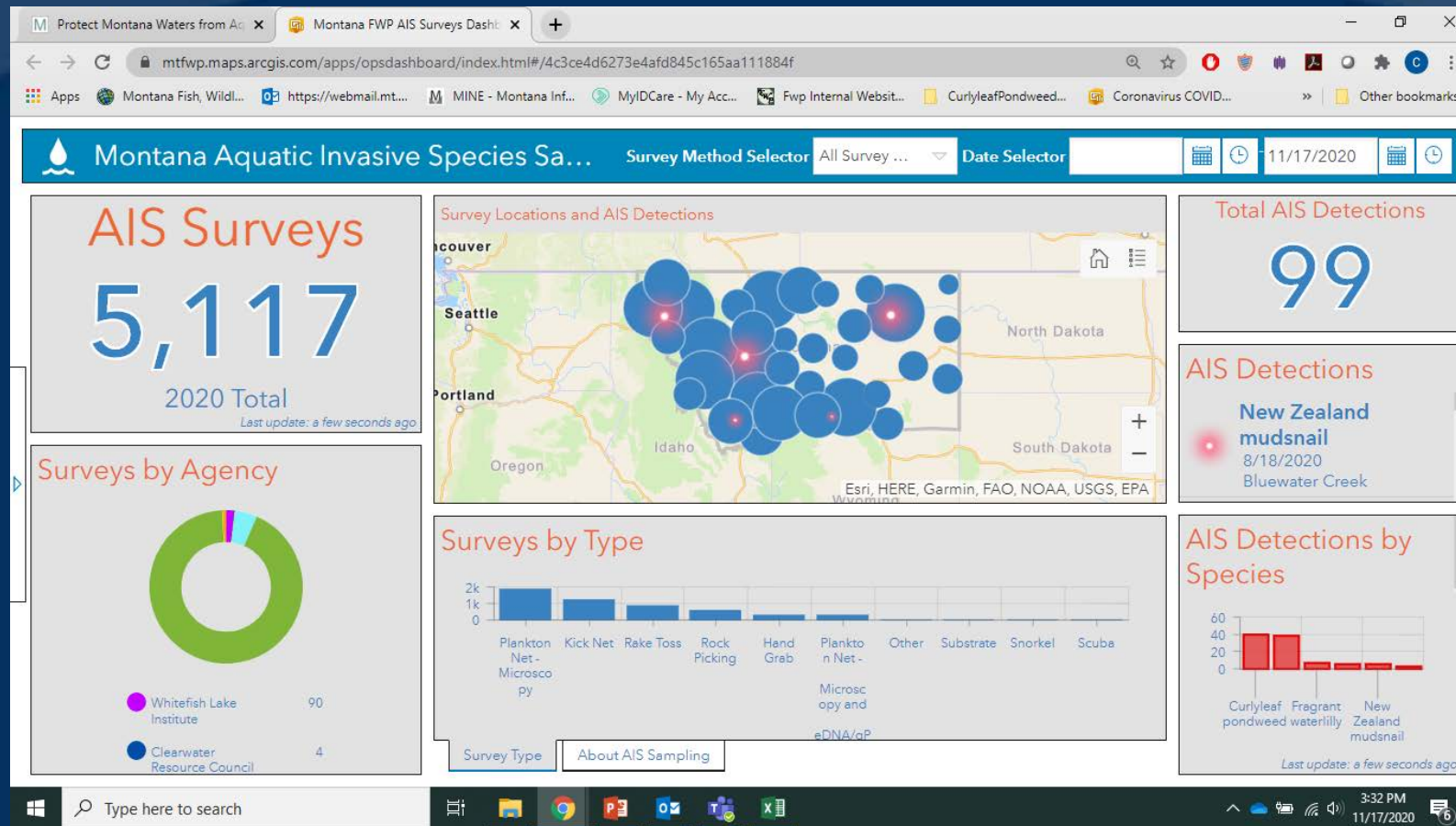


Benthic Sled



AIS Monitoring Dashboard –

<https://cleandraindry.mt.gov/>



2020 Sampling Results



By the Numbers

- Still compiling sampling info from partners
- 396 different waters sampled

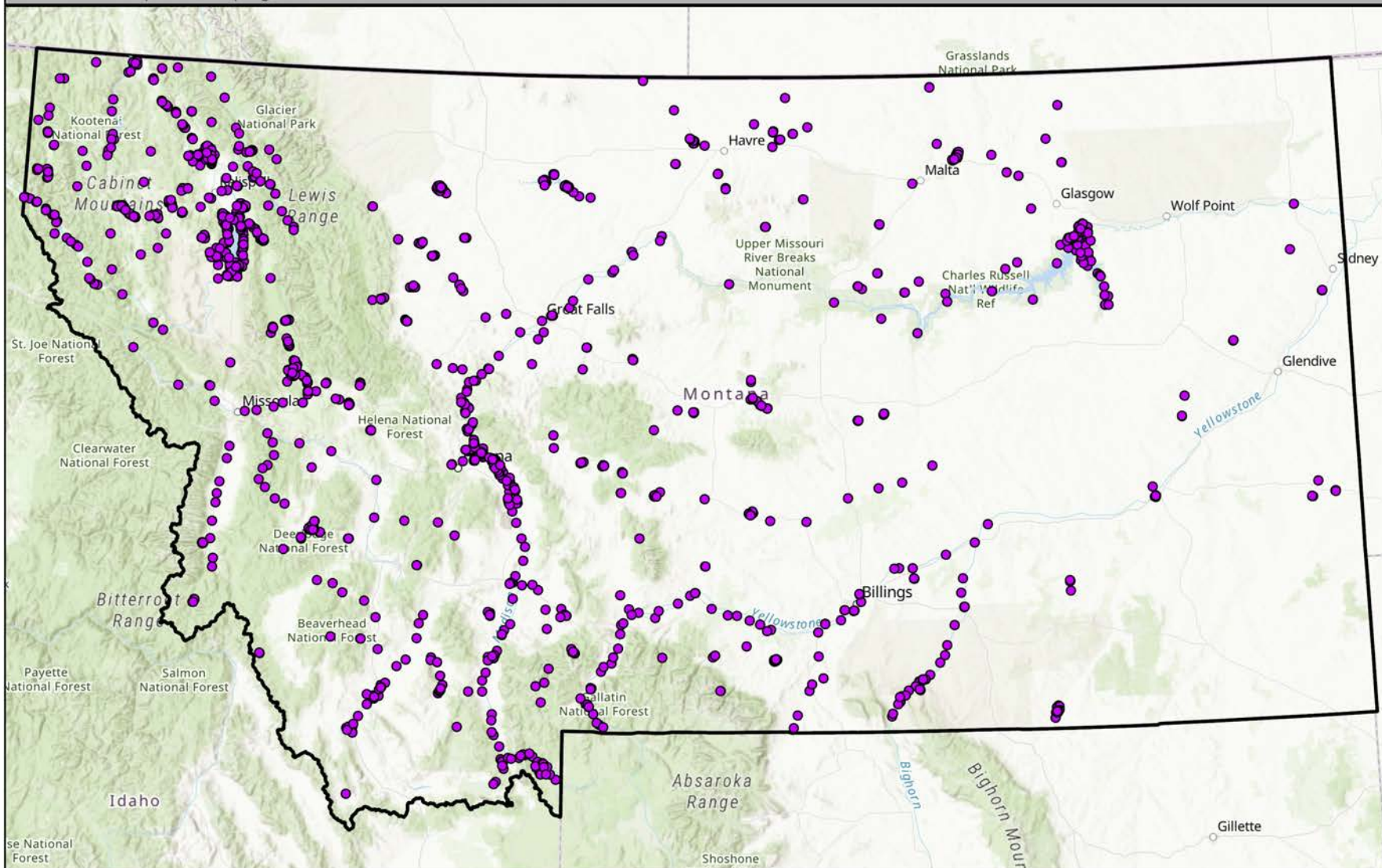
Plankton Net - Microscopy	1889
Plankton Net - Microscopy and eDNA/qPCR	304
Kick Net	1191
Rake Toss	828
Rock Picking	545
Hand Grab	321
Comprehensive Visual Plant Survey	19
Mussel Detection Dogs	7
Substrate	6
Snorkel	3
Scuba	2



AIS Sampling Locations - 2020

MONTANA FWP

Includes FWP and partner sampling efforts current field season - As of 10-26-2020



● AIS Sampling Location



Map Produced by: AIS Bureau

Author: CRM

SurveyedLocations.aprx created 10-26-2020

0 30 60
Miles

Credits: Sampling data from Montana Fish, Wildlife & Parks, Helena, MT. Background Imagery from ESRI



New AIS Finds in 2020

Curlyleaf pondweed

- Lower Glaston Reservoir
 - N of Big Timber
- Deadman's Basin
 - E of Harlowtown

Faucet Snail

- Lost Coon Lake (*Lost Loon Lake*)
 - Near Whitefish
- Smith Lake
 - Near Whitefish



White = West of Continental Divide
Black = East of Continental Divide

New Zealand mudsnail

- Bluewater Fish Hatchery
 - Bridger
- Marias River
 - Below Tiber Reservoir
- Rainbow Reservoir
 - Great Falls
- Spring Meadow Lake
 - Helena

Spiny water nymph

- Frenchtown Pond
 - Frenchtown
- Private pond near Frenchtown Pond

MT AIS Lab Status

Priority	Rank	Turnaround Time (Avg. Days)	Total # Samples	# Complete	# Remaining	% Complete
Risk 5/ Hatchery	5	9	228	228	0	100%
Risk 4	4	9	775	771	4	99%
Risk 3 Lake	3a	47	1,050	551	499	52%
Risk 3 River	3b	60	131	77	54	58%
Out-of-State	3c	25	837	133	704	21%
Risk 2	2	48	397	302	95	76%
Risk 1	1	38	147	106	41	72%
Totals		34	3,565	2,168	1,397	61%



Sample processing is ongoing and will likely not be completed until January.

Tiber Reservoir

- 120 plankton samples
- Shoreline surveys
- FLBS and BOR - eDNA – 2x
 - ROV used as well
- Benthic Sled
- USFWS Divers
- Detection dogs



Deb Tirmenstein

Current State of Tiber Reservoir

- No positive finds in any sampling
- 2021 is Year 5 of 5
 - Final year of sampling before status change
- 2021 sampling will be similar to past efforts



Contact Information

Craig McLane

AIS Monitoring Coordinator

406-438-2592

cmclane@mt.gov

