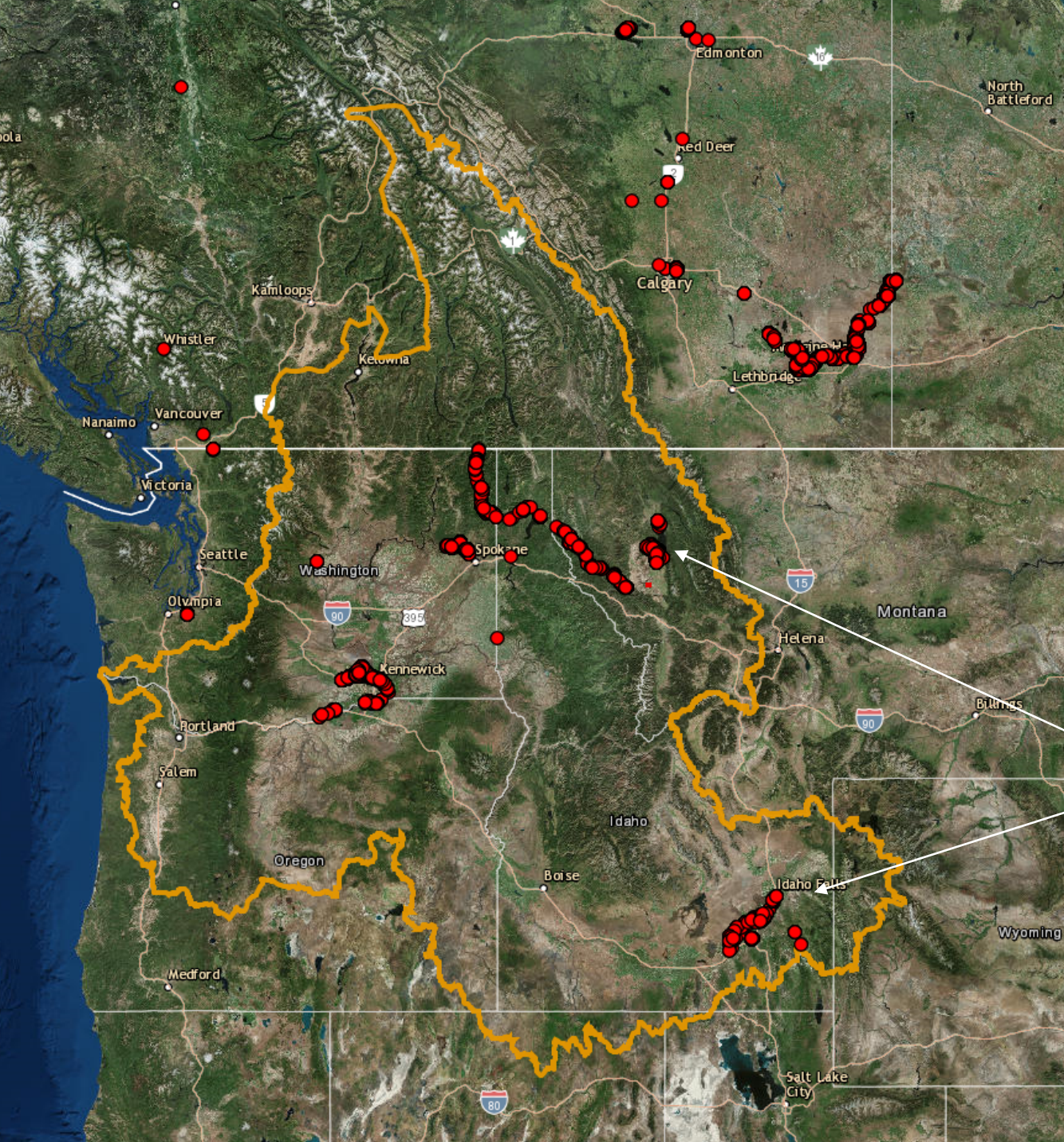




A Columbia Basin Flowering Rush Management Plan



Distribution – Columbia Basin

- <http://rebrand.ly/CRBCWMA>

Oldest populations:

- Snake River area – 1940's
- Flathead Lake – 1960's

Columbia Basin Cooperative Weed Management Area

- Progress since 2017
 - Hired ISAN to assist
 - Jennifer Andreas - Chair
 - Steering Committee
 - Charter
 - Bylaws
 - Website and logo
 - <http://columbiabasincwma.org/>



Summit

- Spokane Feb 27-28, 2018
- Agenda topics
 - Research needs
 - Education and outreach
 - Sampling/monitoring protocols
 - Priority areas for control
 - Permitting and jurisdictional issues
 - Funding



Management Plan

- Target completion Spring 2019
- Goal: facilitate implementation funding
- Committee members:

Mark Sytsma
John Gaskin
Jenn Andreas
Greg Haubrich
Jeremy Varley
Mark Porter
Leah Elwell

Val Miller
Tanya Rushcall
Toni Davidson
Carol Randall
Amy Ferriter
Justin Bush
Jenifer Parsons



Funding Opportunity

- Corps of Engineers WRDA \$1 million for flowering rush
 - Oregon Senator Merkley instrumental in this add
 - For control only, on non-USACE facilities with 50/50 match
 - Biological opinions to be approved
 - Each state in CRB has submitted projects





Leah Elwell

leah@stopais.org

Join the CWMA list serv