

# Montana Aquatic Invasive Species Program



***Montana Fish,  
Wildlife & Parks***

# FWP AIS Program Staff



*Montana Fish,  
Wildlife & Parks*

- Tom Boos (AIS Program Coordinator)
- Zach Crete (AIS Supervisor)
- Craig McLane (Statewide Plant Specialist)
- Stacy Schmidt (Statewide AIS Specialist)
- Jayden Duckworth (Western AIS Specialist)
- Gail Johnson (Lab Specialist)

# NEW FWP AIS Program Staff



Bureau Chief

Area Supervisors

- Landon Holte (Eastern Area Sup)
- Jorri Dyer (Tiber Area Sup)
- Jessi Gudgel (CFR Area Sup)
- Sarah Biggs (SW Area Sup)
- Russ Hartzell (NW Area Sup)

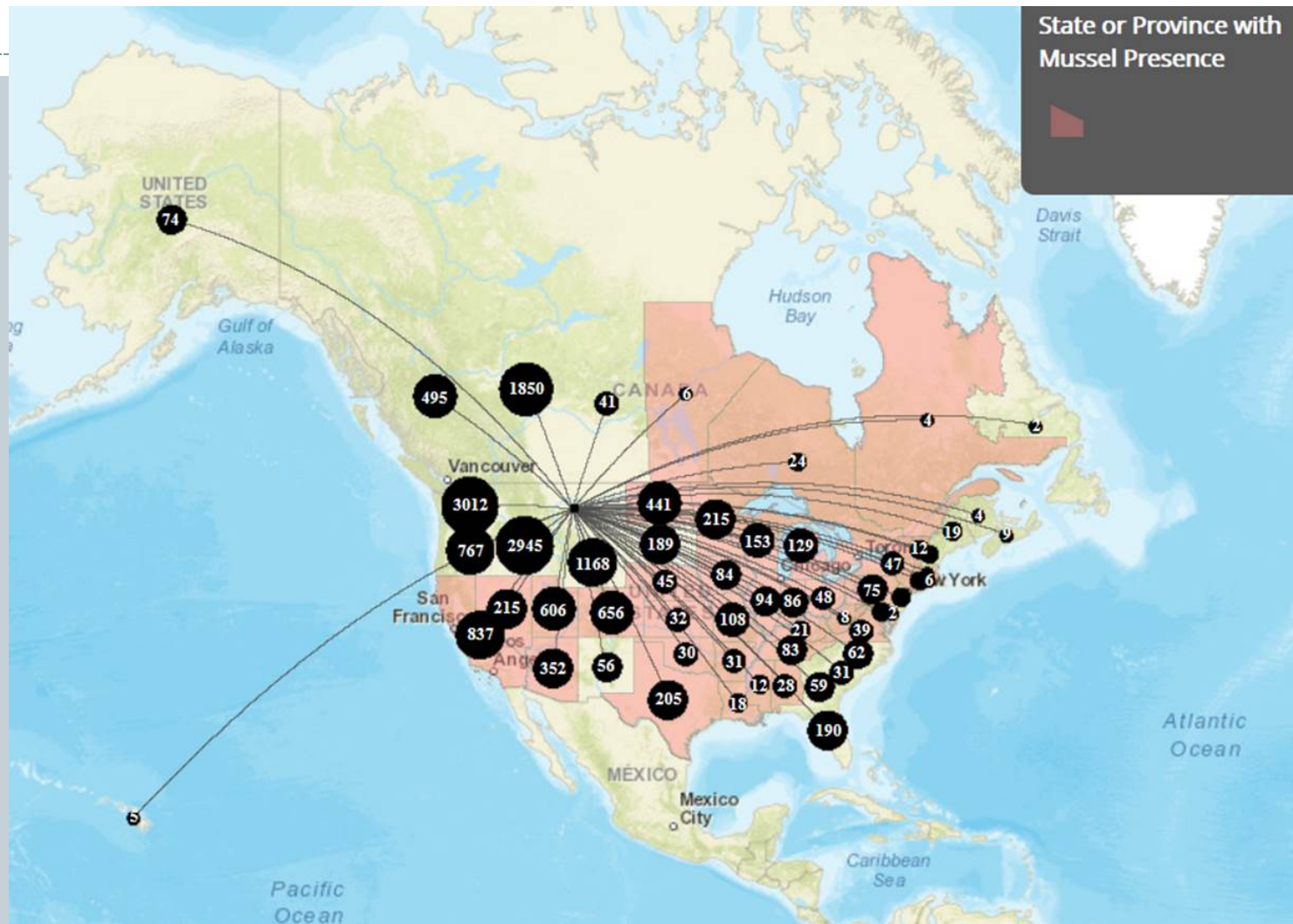
Outreach Specialist

Administrative

4 warden positions



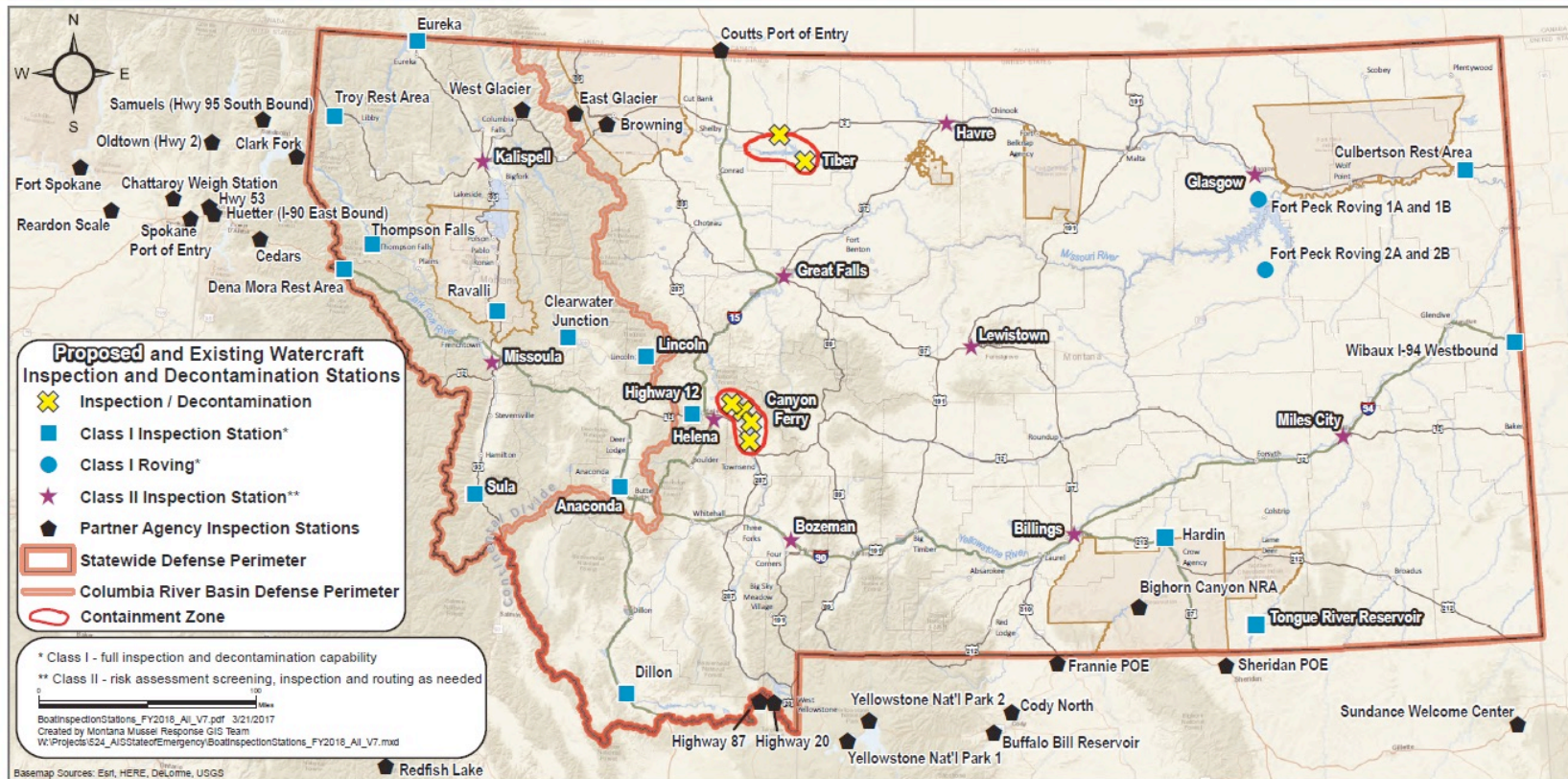
# Boats Come to Montana From All Over



# Statewide & Perimeter Defense Inspection & Decontamination Stations



Proposed and Existing Watercraft Inspection and Decontamination Stations - FY2018-19



# Watercraft Inspections



## Inspection Stations

- 18 Class I inspection stations
  - 5 at south and east border (including Tongue)
  - 4 along the divide (1 at Browning-Blackfeet)
  - 3 at Fort Peck/Fresno
  - 5 in northwest
  - 1 at Clearwater operated by Missoula County
  - Bighorn
- 10 Class II



- MOU with WY
- Agreement with Idaho and Alberta
- Outreach
  - Ongoing and complex
  - Signs

# What Else is New This Year?



- Every boat will be sealed- white for inspection stations and purple for decon station
- Increased enforcement presence
- **IMPORTANT**-High focus on standing water



# Highlights of 2017 season so far...



- Over 9,800 boats inspected
- 7 zebra/quagga mussel fouled boats
- 159 seasonal staff to be full
- Tournaments



# Containment



- Decontamination stations
- CFR – 4 decon stations
- Tiber- 2 decon stations with 3 ramps
- Local Boater Program
  - Ramps
  - Compliance
  - Signage and Enforcement

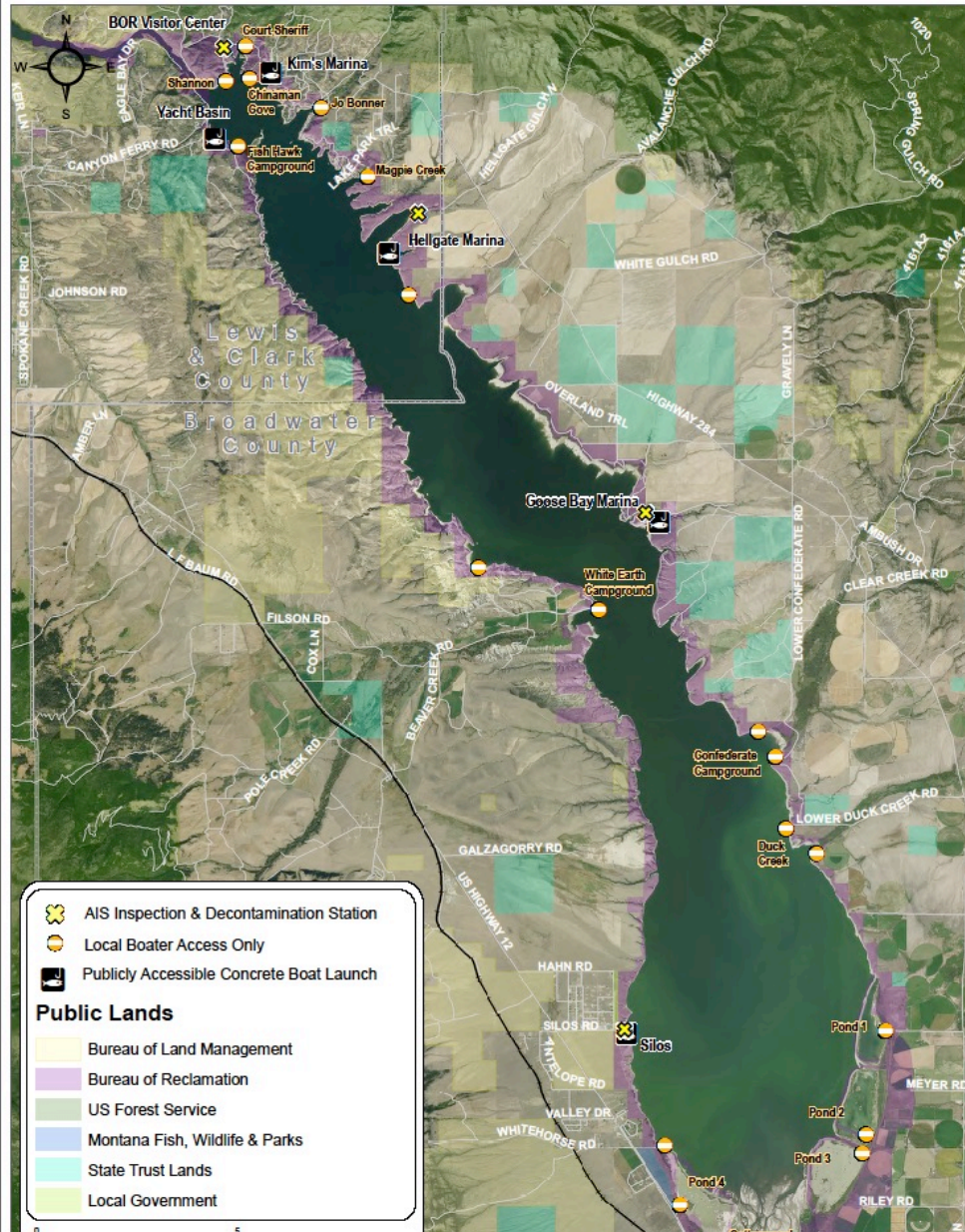






5/17/2017

# Canyon Ferry Reservoir Access Sites

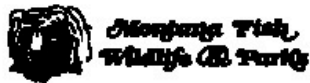
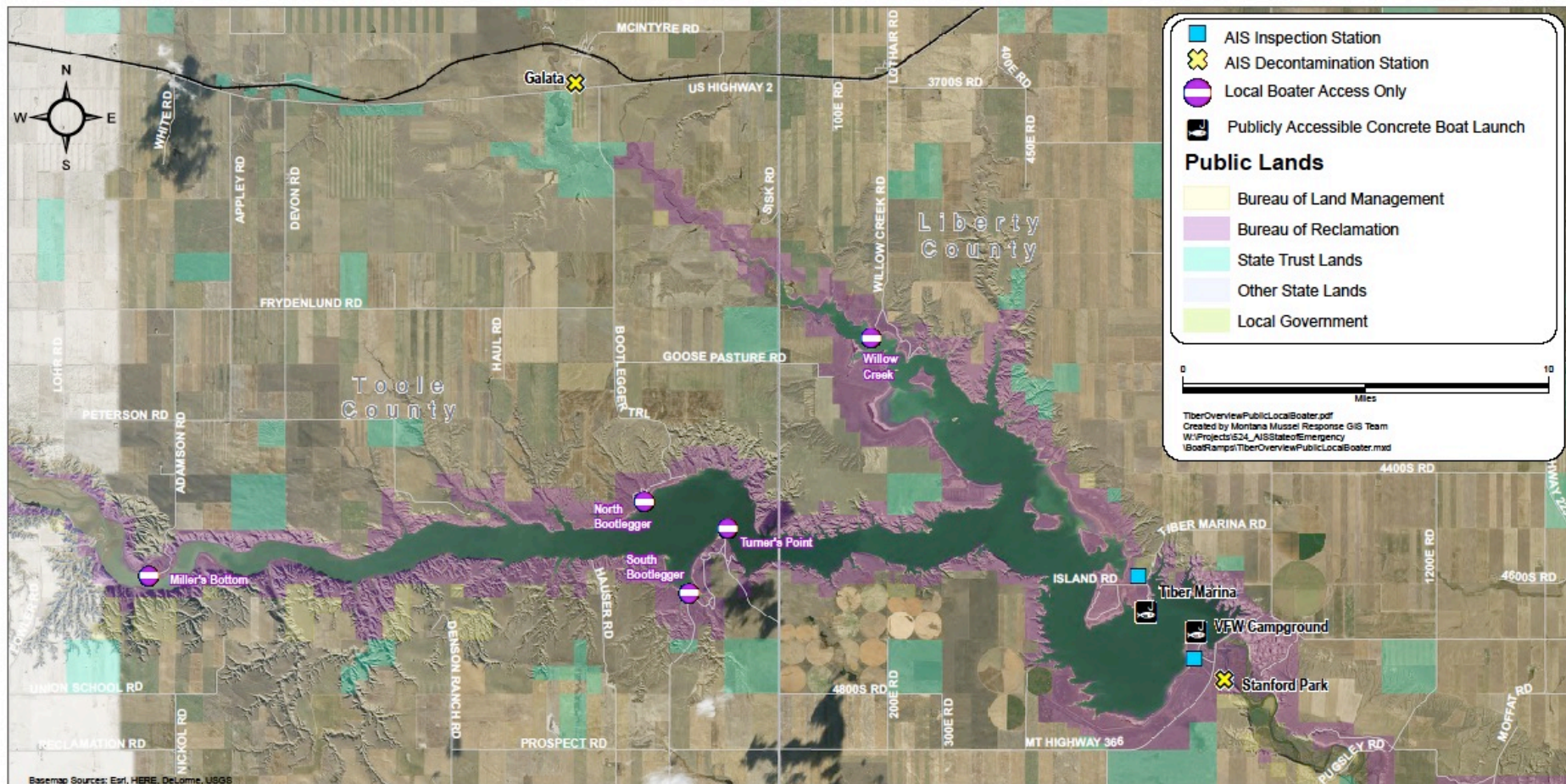






5/17/2017

# Tiber Reservoir Access Sites



CLEAN. DRAIN. DRY.



The Montana Department of  
Natural Resources  
& Conservation



# New Laws & Rules

- **MANDATORY INSPECTION PRIOR TO LAUNCH**

Out-of-state

Continental Divide

- **DECONTAMINATION REQUIREMENTS**
- **NO LAKE OR RIVER WATER TRANSPORT**
- **RAMP RESTRICTIONS**
- **LOCAL BOATER PROGRAM**



# New Laws Continued



## HB622

- Invasive Species Council
- Upper Columbia Conservation Commission
- County authority to adopt ordinances/resolutions
- Missouri River containment program
- Upper Columbia pilot program

## HB 363

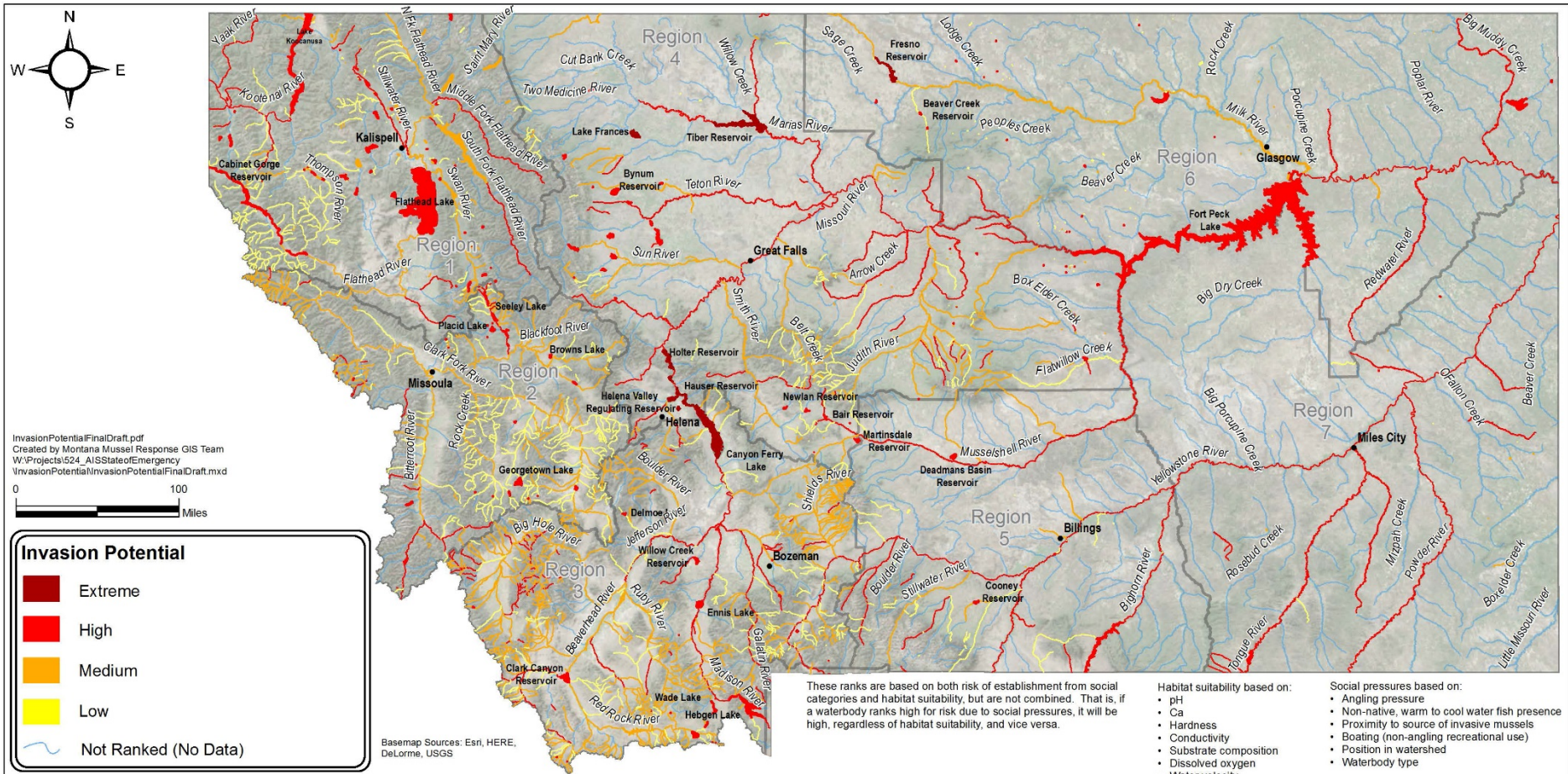
- AIS Prevention Pass- Fishing license- \$2 resident, \$15 non
- Hydropower

# Monitoring



# FWP Scientists Identified Mussel High-Risk Waters

## Dreissenid Mussel Invasion Potential



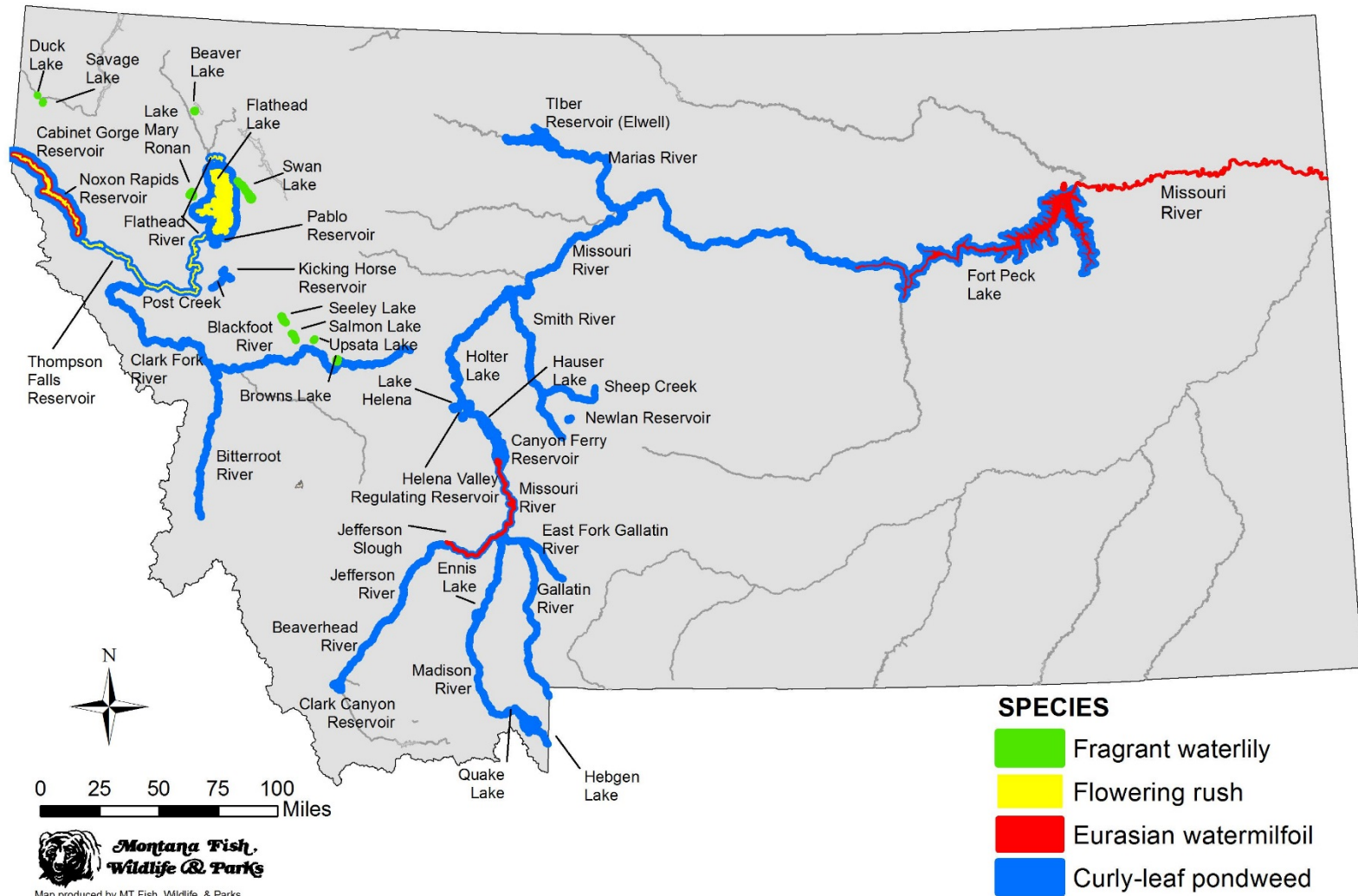


# Priority Waters

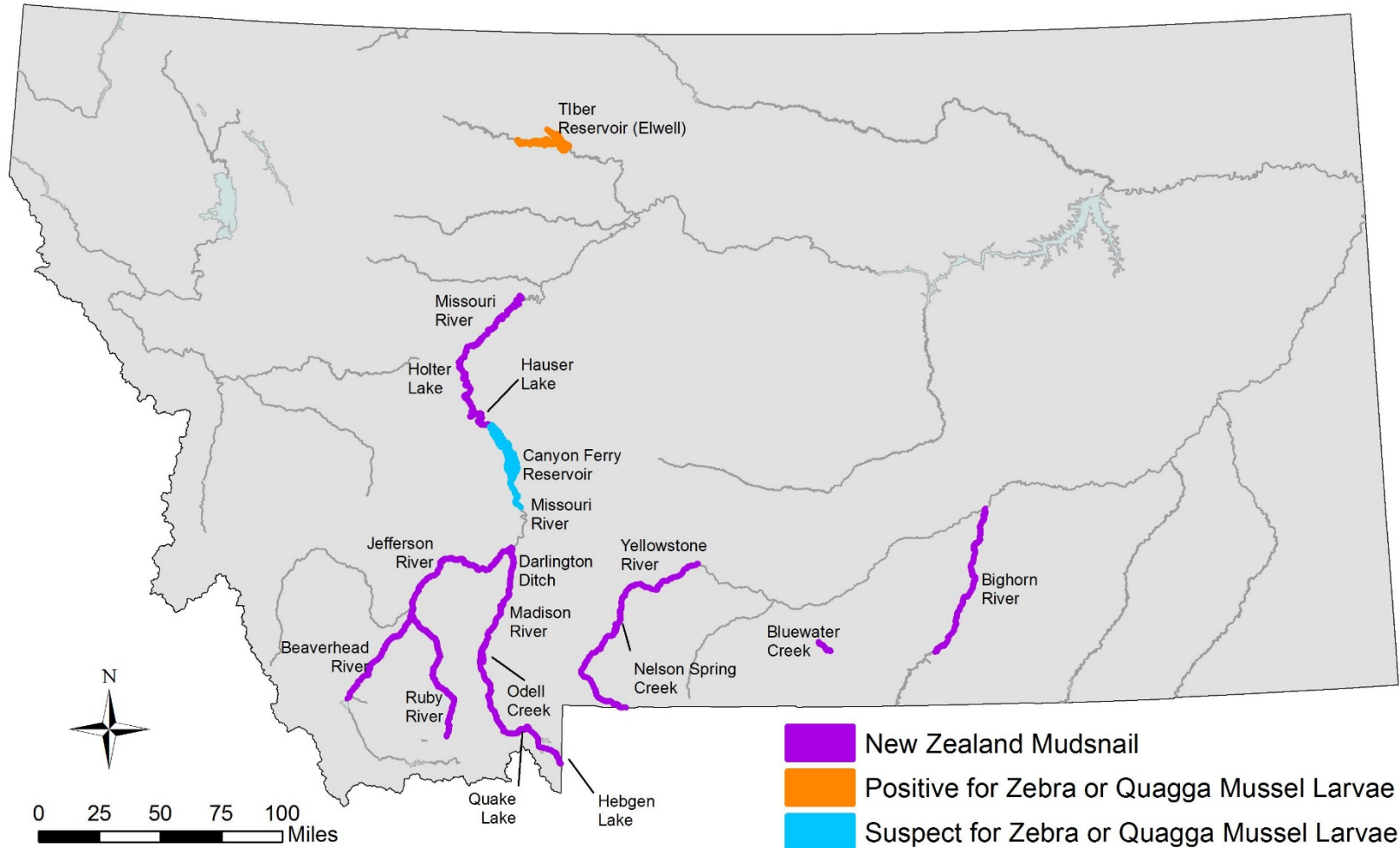




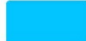
Waterbody	Angler Traffic Quartile	Proximity to mussel waters	Position in watershed Rank	Waterbody Ranking	River Ranking	Waterbody Type	Total Sum
Canyon Ferry Reservoir	4	4	4	4	0	4	20
Tiber Reservoir	4	4	4	4	0	4	20
Hauser Lake	4	4	3	4	0	4	19
Holter Lake	4	4	3	4	0	4	19
Ennis Lake	3	4	2	4	0	4	17
Harrison Lake (Willow Creek Reservoir)	3	4	2	4	0	4	17
Fresno Reservoir	4	4	1	4	0	4	17
Missouri River Sec 07	4	4	3	0	4	2	17
Missouri River Sec 08	4	4	3	0	4	2	17
Missouri River Sec 09	4	4	3	0	4	2	17
Missouri River Sec 10a	4	4	3	0	4	2	17
Missouri River Sec 10b	4	4	3	0	4	2	17
Fort Peck Lake	4	2	3	4	0	4	17
Helena Valley Regulating Reservoir	3	4	3	3	0	4	17
Hebgen Lake	4	2	2	4	0	4	16
Ruby Reservoir	3	3	2	4	0	4	16
Georgetown Lake	4	3	1	4	0	4	16
Lake Frances	3	4	1	4	0	4	16
Martinsdale Reservoir	3	4	1	4	0	4	16
Missouri River Sec 06b	3	4	3	0	4	2	16
Madison River Sec 01	4	4	2	0	3	2	15
Madison River Sec 02	4	4	2	0	3	2	15

# Aquatic Invasive Plant Locations in Montana - 2016



# Aquatic Invasive Mollusk Locations in Montana - 2016



-  New Zealand Mudsnailed
-  Positive for Zebra or Quagga Mussel Larvae
-  Suspect for Zebra or Quagga Mussel Larvae



**Montana Fish,  
Wildlife & Parks**

Map produced by MT Fish, Wildlife, & Parks