

# **Idaho Invasive Species Program Update**

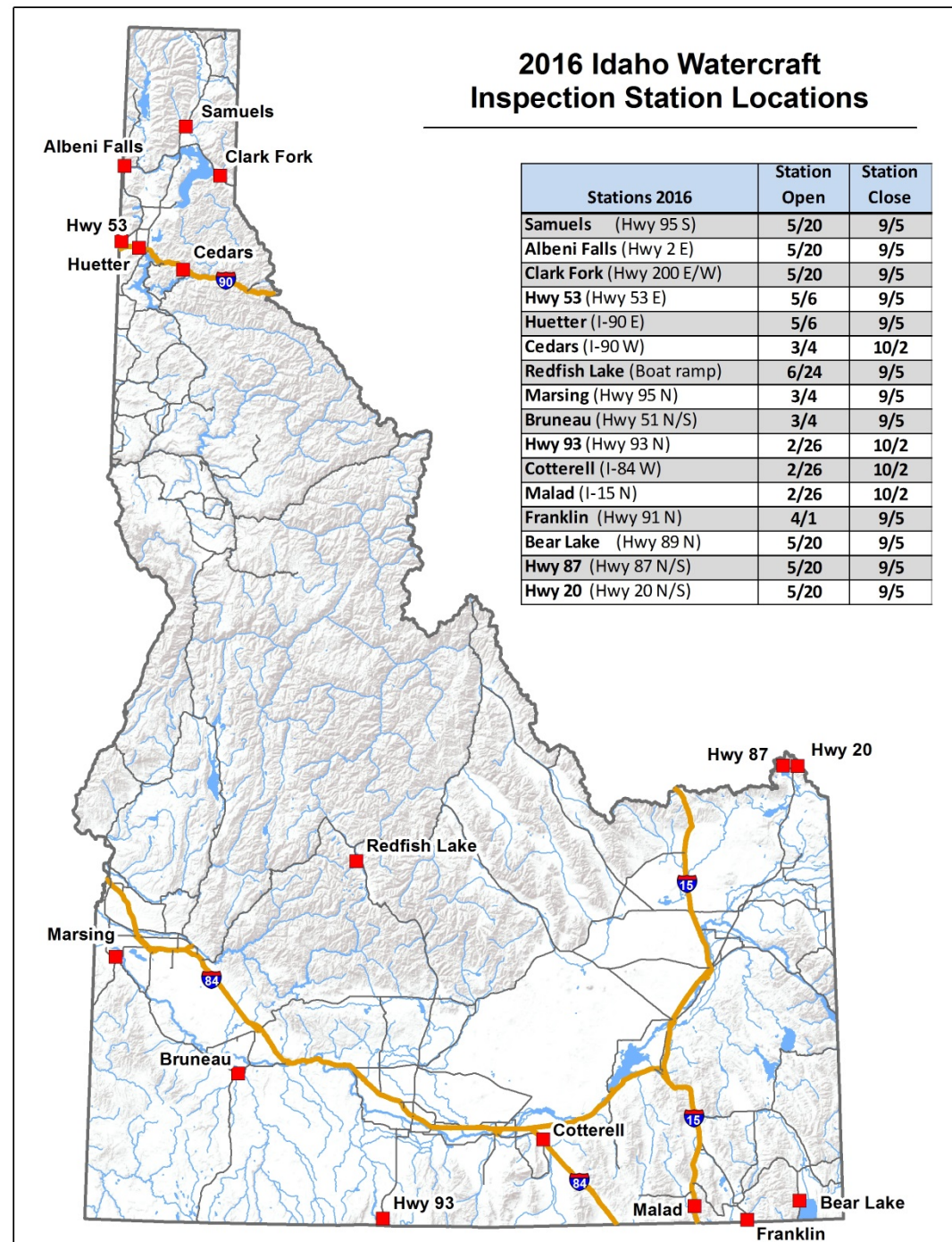
Thomas Woolf

Aquatic Invasive Species Program Manager

Idaho State Department of Agriculture

# Watercraft Inspection 2016

- 8<sup>th</sup> year of the inspection program.
- 16 stations.
- February through October.
- Boat ramp and roving inspections.



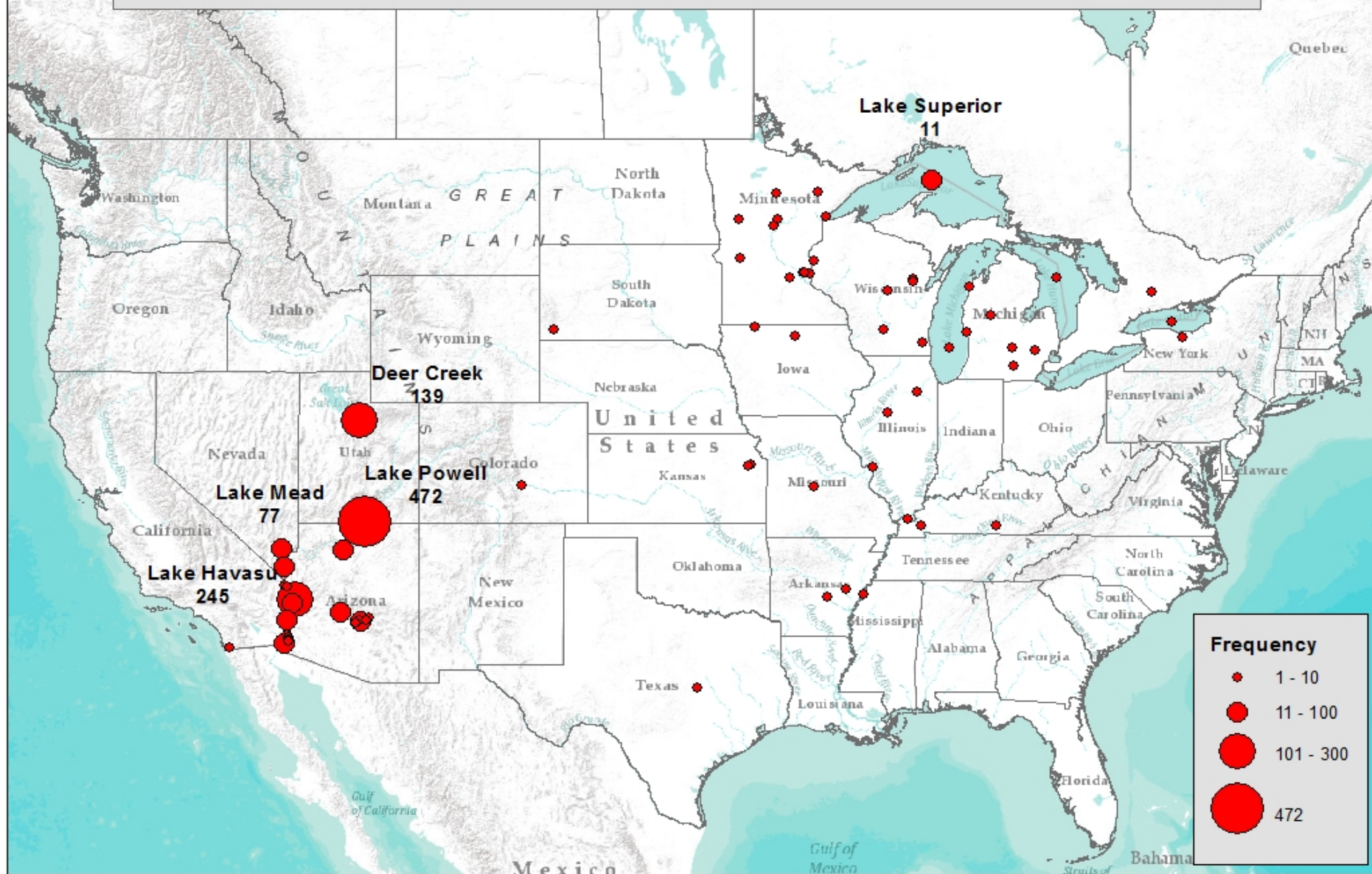
# Inspection Numbers 2016

- 89,390 inspections.
  - 41% increase over last year.
- 19 mussel fouled vessels.
  - First drift boat.
  - First with mussels on an anchor.
- 480 with weeds.
- 1,200 recently visited mussel waters.



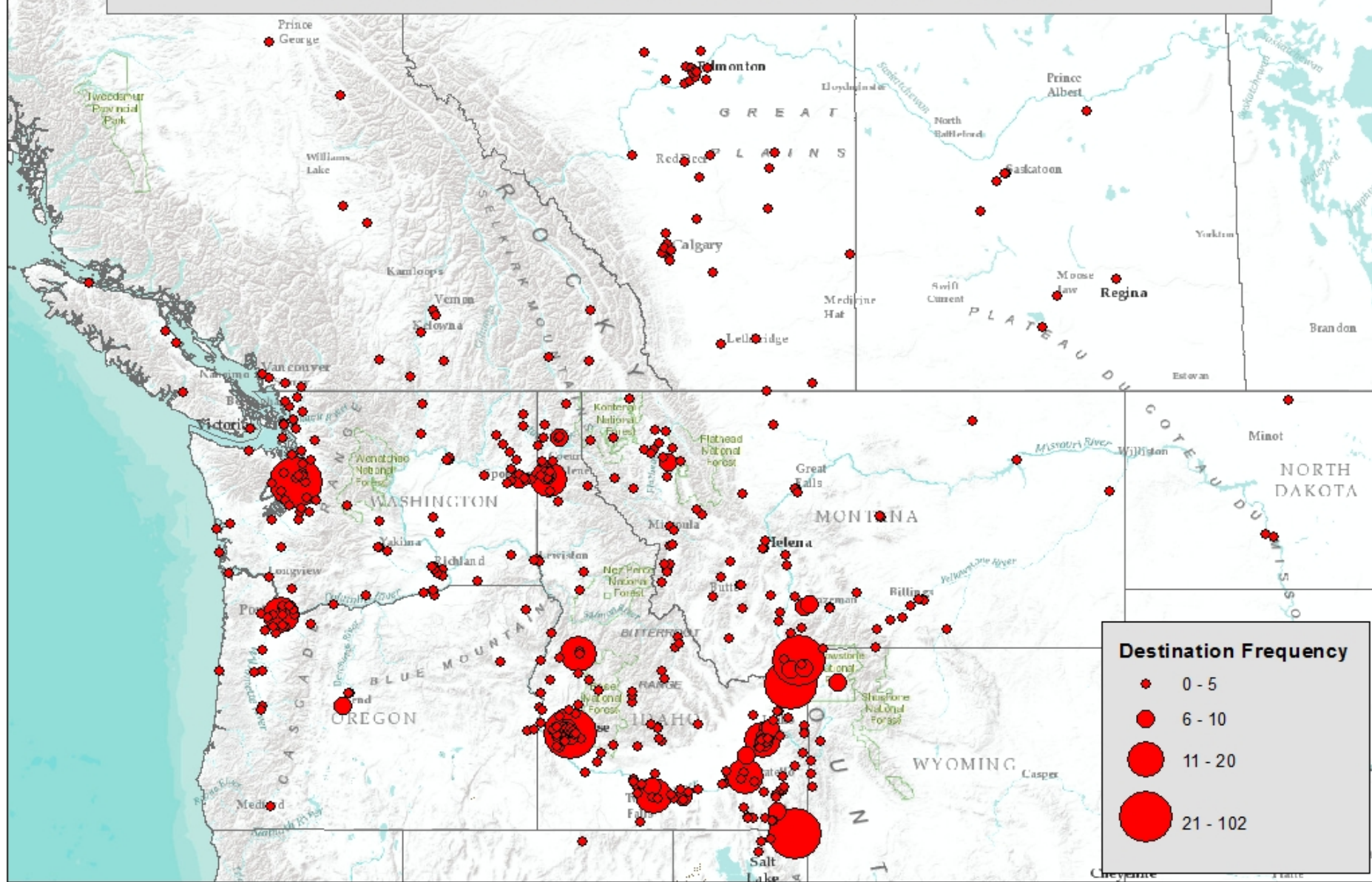


# Idaho Watercraft Inspection 2016: Vessels From Mussel Positive Waters in the Previous 30 Days



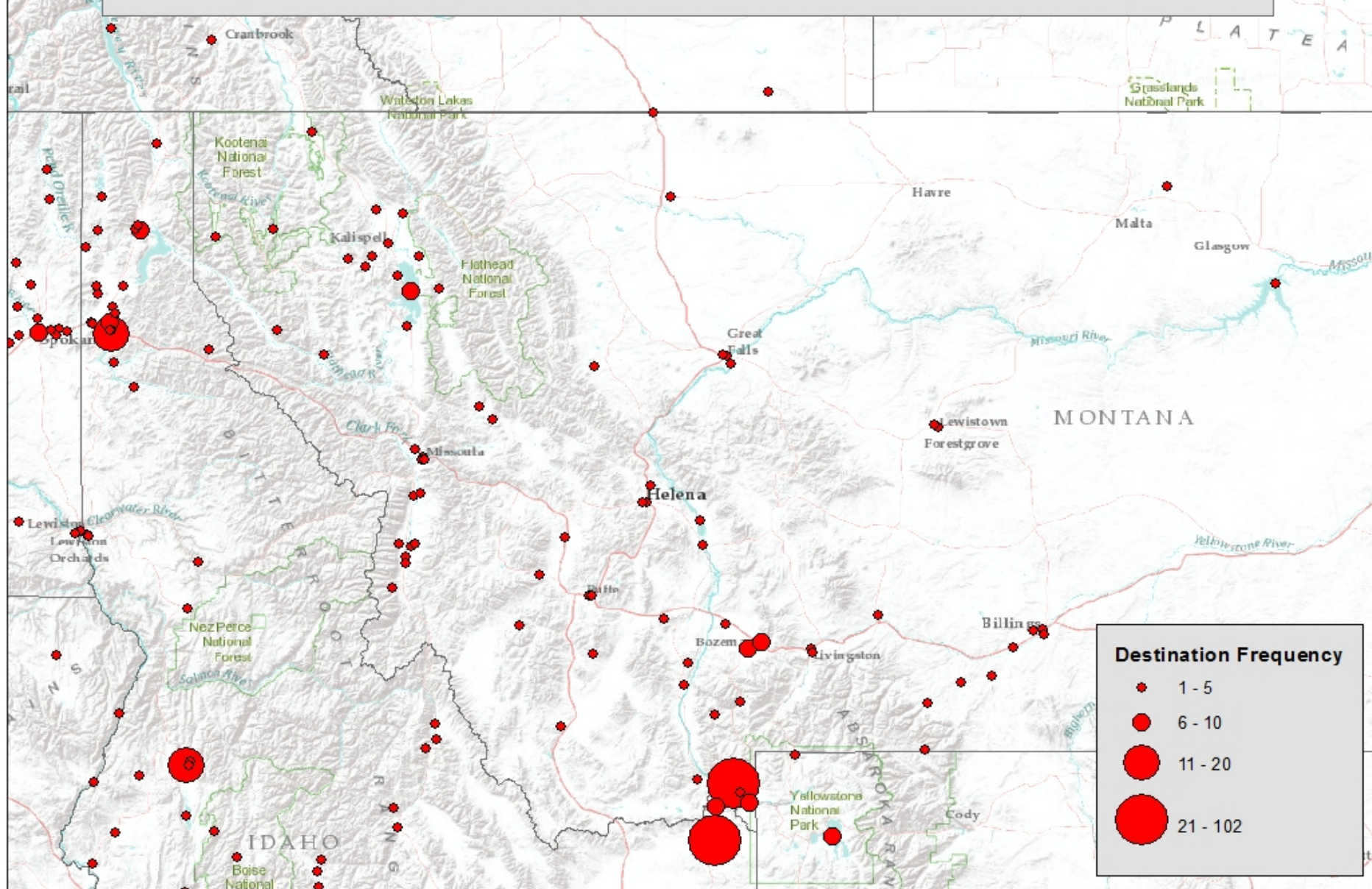


# Idaho Watercraft Inspection 2016: Destination Following Recent Visits to Mussel Positive Waters





# Idaho Watercraft Inspection 2016: Destination Following Recent Visits to Mussel Positive Waters

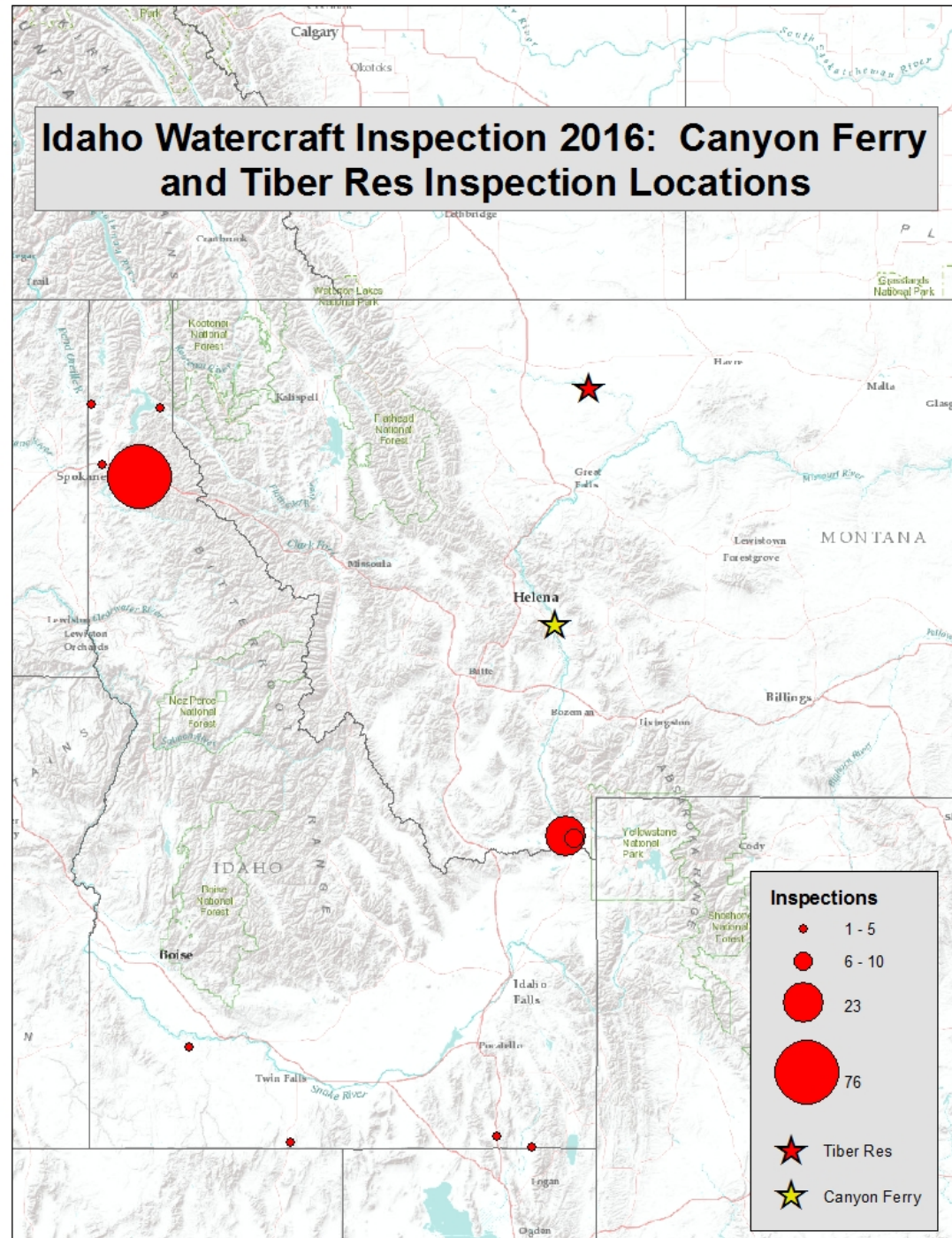
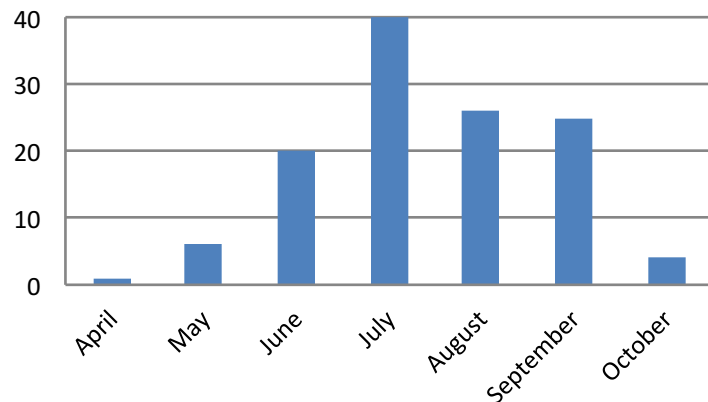




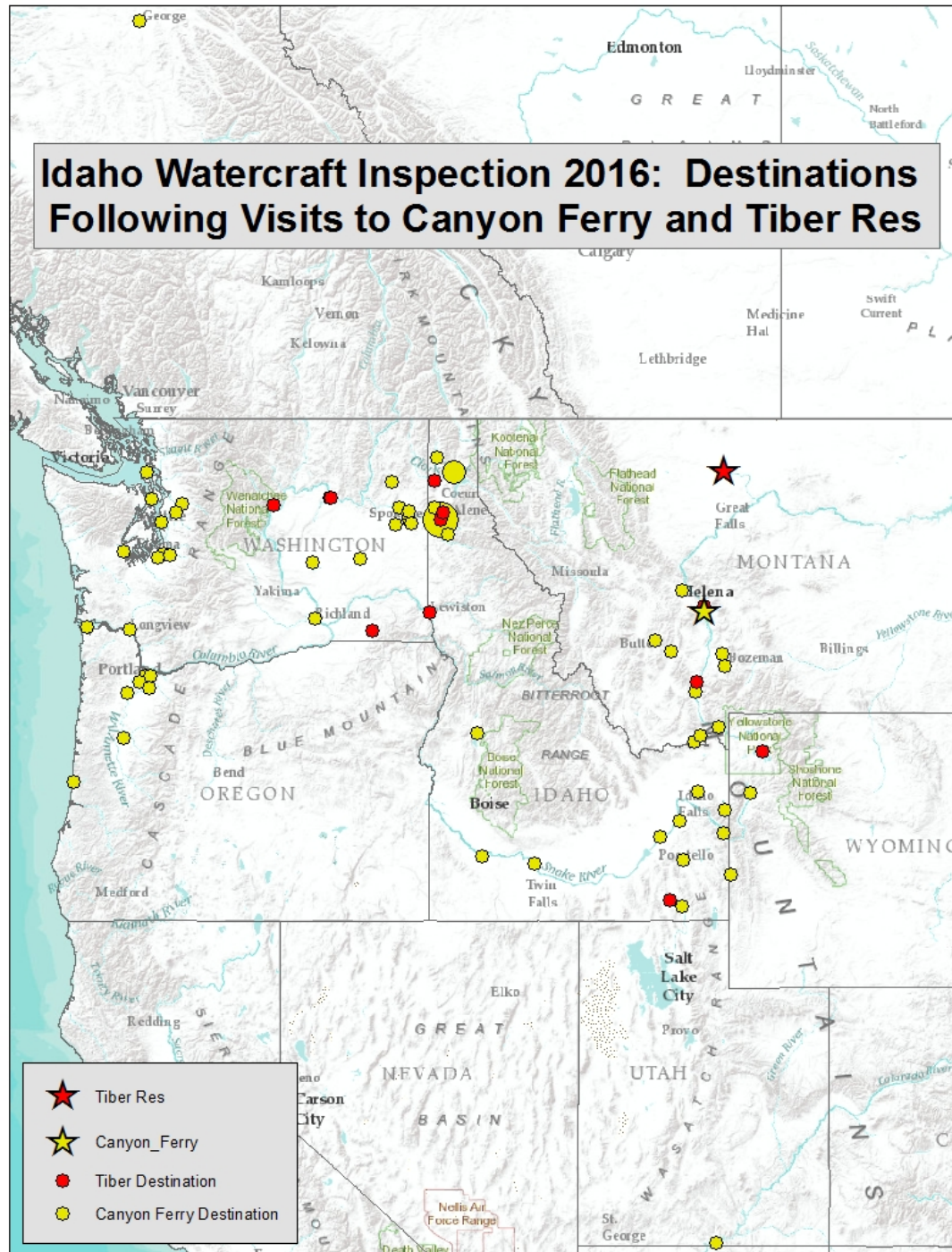
# 2016 Canyon Ferry & Tiber Res Inspections

- 109 Canyon Ferry.
- 14 Tiber Res.

Inspections by Month  
Canyon and Tiber Res 2016



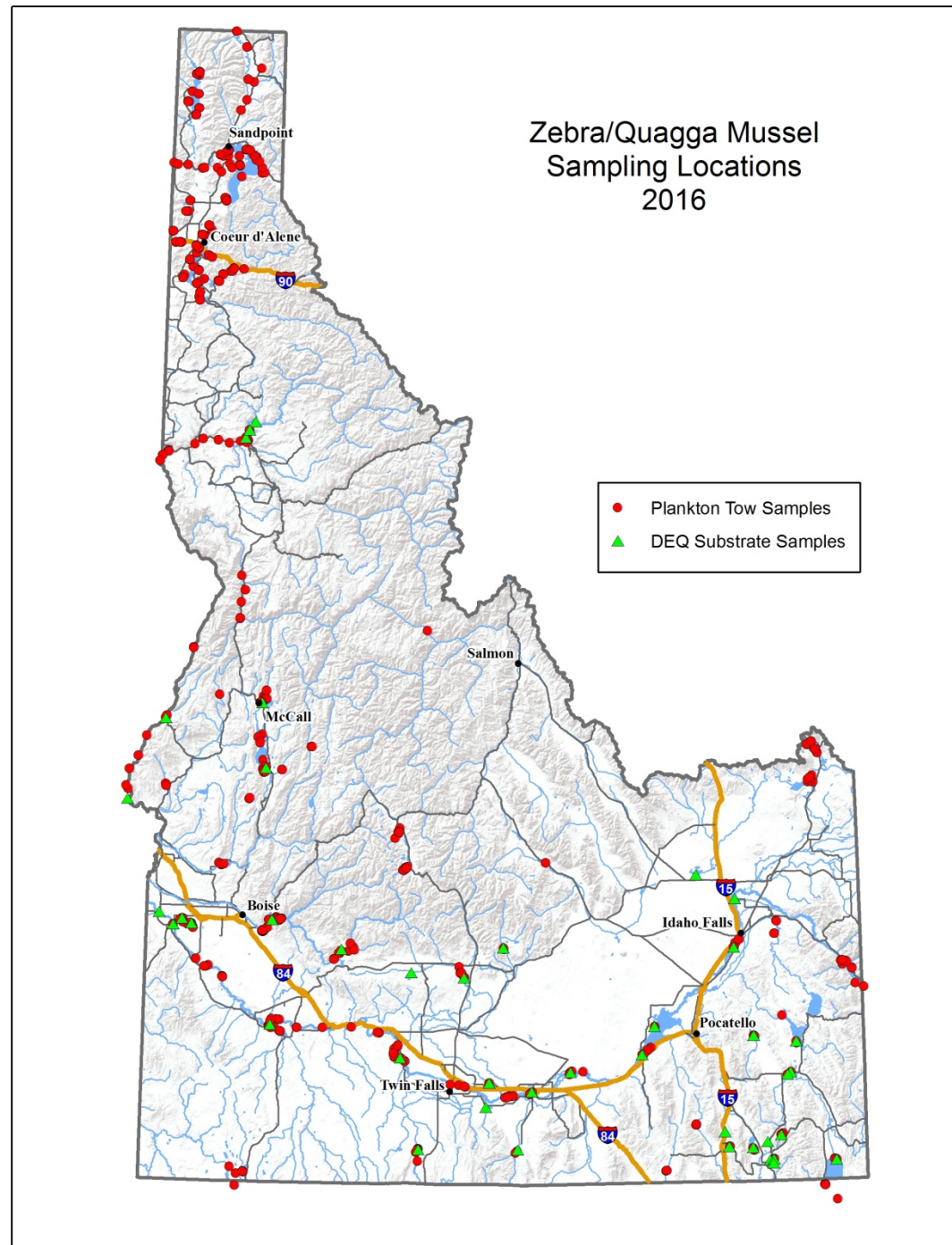
## Idaho Watercraft Inspection 2016: Destinations Following Visits to Canyon Ferry and Tiber Res





# 2016 Monitoring

- 889 samples processed.
- Over 70 waterbodies.
- No suspicious detections.
- Considering use of PCR in 2017.



# Idaho Program Plans 2017

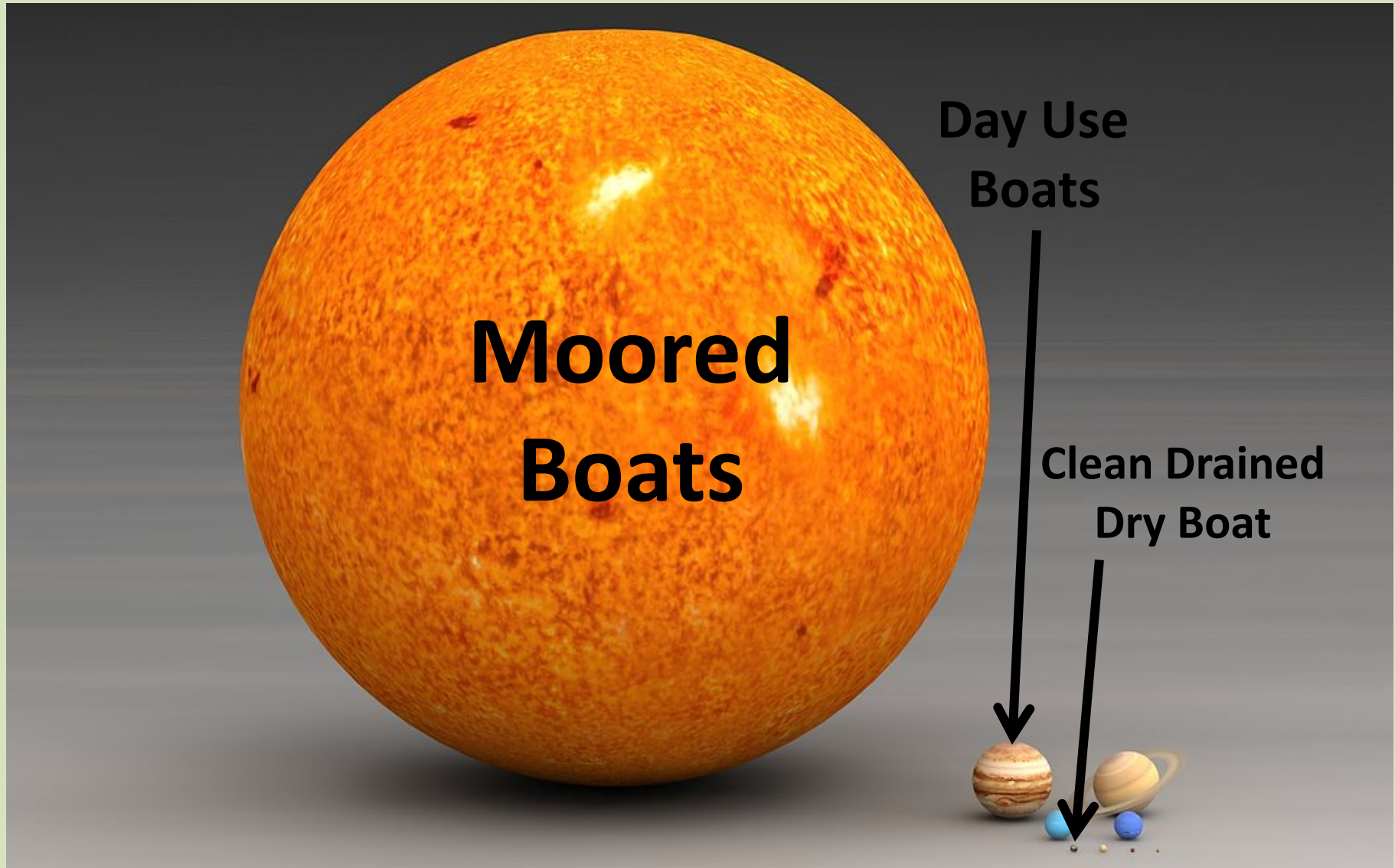




# Considerations for 2017

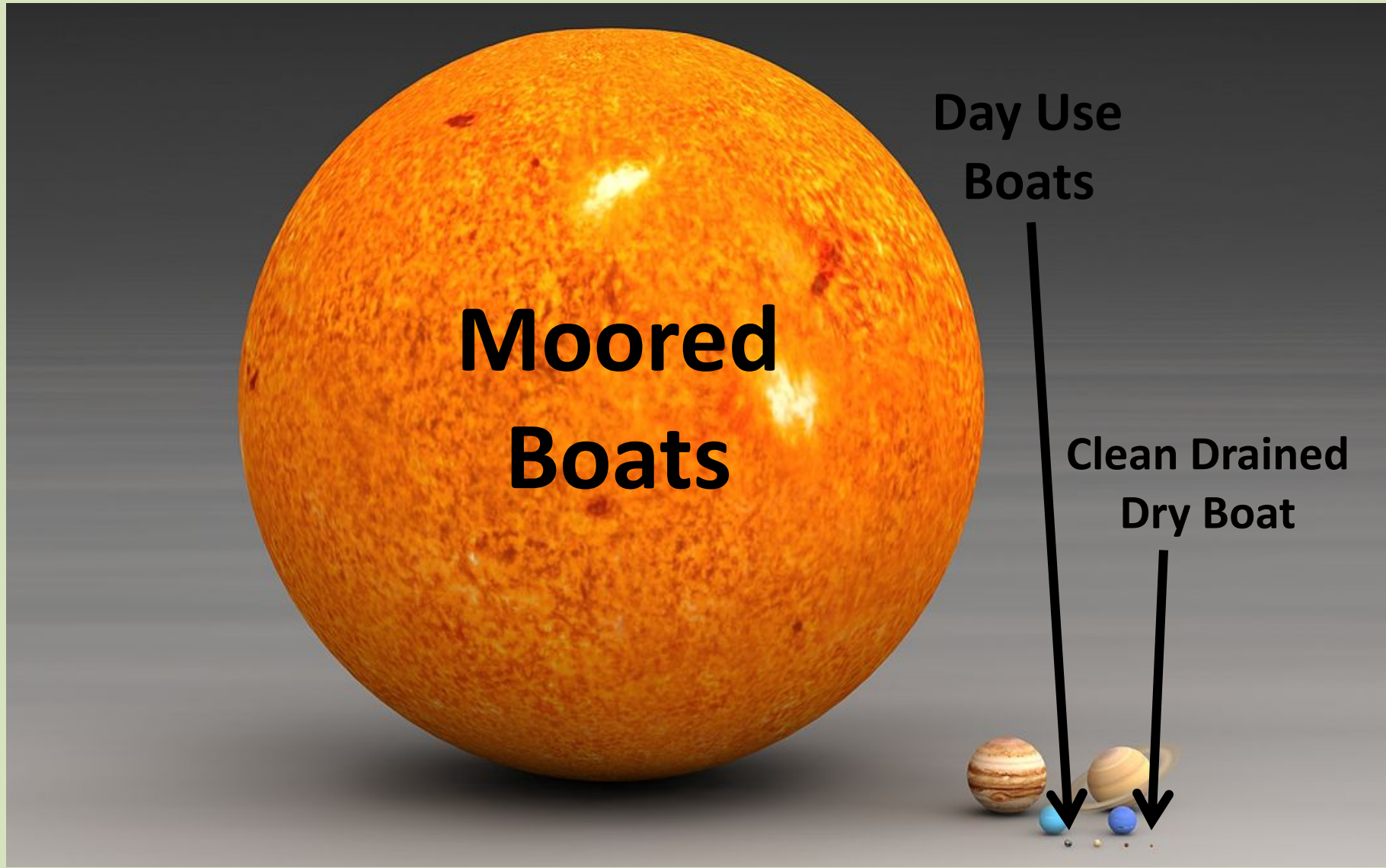
- Data on mussel fouled vessels:
  - Record how long the vessel was out of the water.
    - 58% Idaho mussel boats in 2017 out of the water for more than 30 days.
  - Record previous inspection / notification.
- Prioritize efforts to addresses risk.
  - Focus on moored watercraft.

# Risk of Mussel Introduction and Establishment





# Risk of Mussel Introduction and Establishment



# 2016 High-Risk Inspections

Waterbody	Total Number	Average Days In	Average Days Out	Over 20 Days In	Percent Non- Motorized	Percent Previously Inspected
Powell	472	6	5	4	14	58
Havasu	245	29	8	29	15	36
Grand Canyon	66	12	6	12	79	9
Pleasant / Mohave	46	15	12	4	24	28
Eastern Waters	108	7	11	5	56	25
Mead	77	14	6	9	4	43



# 2016 High-Risk Inspections

Waterbody	Total Number	Average Days In	Average Days Out	Over 20 Days In	Percent Non- Motorized	Percent Previously Inspected
Powell	472	6	5	4	14	58
Havasu	245	29	8	29	15	36
Grand Canyon	66	12	6	12	79	9
Pleasant / Mohave	46	15	12	4	24	28
Eastern Waters	108	7	11	5	56	25
Mead	77	14	6	9	4	43

# Explore a Regional Strategy to Address the Highest Risk

- A consistent effort directed at locations where vessels with live mussels originate.
  - Marinas at mussel impacted waters.
    - Havasu and Pleasant.
  - Encourage decontamination / notification.
- A directed effort targeting boat brokers, auctions, marinas, and small independent haulers.
  - Avoid delays, fines and quarantine.
- Allocate regional resources based on risk.



## Western States and Provinces Watercraft Inspection Contacts



Photo credit: Idaho.gov

Aquatic invasive species, such as zebra and quagga mussels, pose a threat to the economy and natural resources of western states and provinces. Anyone who uses water – for work or play – can help stop the spread of invasive species, which can be transported by boats and trailers. States and provinces are staffing watercraft inspection stations throughout the West to ensure you **Clean, Drain, Dry** your boat before you launch.

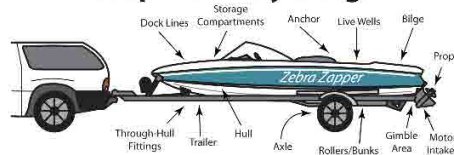
### Follow these simple steps:

**Clean** - Remove all plants, animals, and mud, and thoroughly wash everything, especially all crevices and other hidden areas.

**Drain** - Eliminate all water before leaving the area, including wells, ballast, and engine cooling water. Pull the drain plug!

**Dry** - Allow sufficient time for your boat to completely dry before launching in other waters.

Before leaving and before launching...  
**inspect everything!**



### Know before you go!

If your boat has been in water with known invasive species, contact the agency in your destination state for inspection requirements. See the back of this card for contact information.

For more information: [www.westernais.org/moving-a-boat](http://www.westernais.org/moving-a-boat)

## Watercraft Inspection Contacts

<b>Alaska:</b> Department of Fish & Game <a href="http://www.adfg.alaska.gov/index.cfm?adfg=invasive.main">www.adfg.alaska.gov/index.cfm?adfg=invasive.main</a>	(907)465-6183
<b>Alberta:</b> <a href="http://aep.alberta.ca">http://aep.alberta.ca</a>	(855)336-BOAT (2628)
<b>Arizona:</b> Game and Fish Department <a href="http://www.azgfd.gov/ais">www.azgfd.gov/ais</a>	(623)236-7608
<b>British Columbia:</b> <a href="http://www.for.gov.bc.ca/hra/invasive-species/mussels.htm">www.for.gov.bc.ca/hra/invasive-species/mussels.htm</a>	(877)952-7277
<b>California:</b> Department of Fish and Wildlife <a href="http://www.wildlife.ca.gov/mussels">www.wildlife.ca.gov/mussels</a>	(866)440-9530
<b>Colorado:</b> Parks & Wildlife <a href="http://www.cpw.state.co.us">www.cpw.state.co.us</a>	(303)291-7295
<b>Idaho:</b> Department of Agriculture <a href="http://www.invasivespecies.idaho.gov">www.invasivespecies.idaho.gov</a>	(877)336-8676
<b>Kansas:</b> Department of Wildlife, Parks & Tourism <a href="http://www.protectKSwaters.org">www.protectKSwaters.org</a>	(620)342-0658
<b>Lake Tahoe:</b> AIS Program <a href="http://www.TahoeBoatInspections.com">www.TahoeBoatInspections.com</a>	(888)824-6267
<b>Manitoba:</b> <a href="http://www.Manitoba.ca/StopAIS">www.Manitoba.ca/StopAIS</a>	87-STOPAIS-0
<b>Montana:</b> Department of Fish, Wildlife & Parks <a href="http://fwp.mt.gov/fishAndWildlife/species/ais">http://fwp.mt.gov/fishAndWildlife/species/ais</a>	(406)444-2449
<b>Nebraska:</b> Invasive Species Program <a href="http://neinvasives.com/">http://neinvasives.com/</a>	(402)472-3133
<b>Nevada:</b> Department of Wildlife <a href="http://www.ndow.org">www.ndow.org</a>	(775)688-1314
<b>New Mexico:</b> Department of Game and Fish <a href="http://www.wildlife.state.nm.us/ais">www.wildlife.state.nm.us/ais</a>	(888)248-6866
<b>North Dakota:</b> Game and Fish Department <a href="http://gf.nd.gov/ans">http://gf.nd.gov/ans</a>	(701)328-6300
<b>Oregon:</b> Dept. of Fish & Wildlife, State Marine Board <a href="http://www.boatoregon.com">www.boatoregon.com</a>	(503)947-6000
<b>Saskatchewan:</b> <a href="http://www.environment.gov.sk.ca/invasivespecies">www.environment.gov.sk.ca/invasivespecies</a>	(800)667-7561
<b>South Dakota:</b> Game, Fish & Parks <a href="http://www.sdleastwanted.com">www.sdleastwanted.com</a>	(605)223-7700
<b>Texas:</b> Parks and Wildlife Department <a href="http://texasinvasives.org/zebramussels/">http://texasinvasives.org/zebramussels/</a>	(254)867-7974
<b>Utah:</b> Division of Wildlife Resources <a href="http://www.wildlife.utah.gov/dwr/invasive-mussels.html">www.wildlife.utah.gov/dwr/invasive-mussels.html</a>	(385)239-0861
<b>Washington:</b> Department of Fish and Wildlife <a href="http://www.wdfw.wa.gov/ais">www.wdfw.wa.gov/ais</a>	(888)WDFW-AIS
<b>Wyoming:</b> Game & Fish Department <a href="http://wgfd.wyo.gov/ais">http://wgfd.wyo.gov/ais</a>	(877)WGFD-AIS

EXPECT YOUR BOAT TO BE INSPECTED

**CLEAN, DRAIN, DRY**

## BEST MANAGEMENT PRACTICES TO COMPLY WITH STATE LAWS AND PREVENT THE SPREAD OF AQUATIC INVASIVE SPECIES



### Western States and Provinces Best Management Practices to Comply with State/Provincial Laws and Prevent the Spread of Aquatic Invasive Species

#### Preventing Delays and Reducing Costs Associated with Transporting, Buying, and Selling Boats

Aquatic invasive species, such as zebra and quagga mussels, pose a threat to the economy and natural resources of western states and provinces. In addition, fines and costly delays associated with transporting boats with aquatic invasive species can affect the recreational boating industry.

To prevent the spread of aquatic invasive species, the Pacific States Marine Fisheries Commission, U.S. Fish and Wildlife Service, Western Regional Panel on Aquatic Nuisance Species, and others are making information available to boat haulers, auctioneers, marinas, manufacturers, and brokers to make it easy to comply with state, provincial and federal laws, prevent costly delays in transporting or selling boats, and help reduce the spread of aquatic invasive species.

A few key facts you should know:

#### It's the Law!

Federal laws, including the Lacey Act in the United States and the Fisheries Act in Canada, make it illegal to transport listed invasive species into the U.S. and across state and international borders. In addition, the western states and provinces have enacted legislation to reduce the spread of aquatic invasive species. Businesses and individuals have been cited for transporting boats into and through western states and provinces with invasive mussels attached, resulting in costly fines and significant delays.

#### CLEAN, DRAIN, DRY, NOTIFY

If you follow three simple steps, your chances of experiencing any delays or fines associated with transporting or selling a boat are minimized. A Clean, Drained, and Dry boat has no plants or animals attached and is not carrying water in its wells, ballast, or engine. Most

jurisdictions have drain plug laws – any boat out of water should have a pulled drain plug.

#### Communication Prevents Delays

The western state and provincial AIS coordinators know the laws and regulations for their jurisdictions, and they're available to assist you by informing you of their laws and providing you with any other tools and information you need to successfully transport a boat, or sell/auction a boat, particularly those coming from water bodies infested with aquatic invasive species. Contact any western state or provincial AIS coordinator via our website:

[www.westernais.org/moving-a-boat](http://www.westernais.org/moving-a-boat)



## BEST MANAGEMENT PRACTICES TO COMPLY WITH STATE LAWS AND PREVENT THE SPREAD OF AQUATIC INVASIVE SPECIES

### Boat Haulers - Know Before You Go

Here's what you can do to comply with state laws and help prevent the spread:

Access our website ([www.westernais.org/moving-a-boat](http://www.westernais.org/moving-a-boat)) to become familiar with information about moving a boat between states or from one water body to another.

If you are transporting a boat:

- **CLEAN** the boat – Remove all plants, animals, and mud, and thoroughly wash everything, especially FROM all crevices and other hidden areas. Inspect the plumbing system for hitchhikers!
- **DRAIN** the boat – Eliminate all water before leaving the area, including wells, ballast, and engine cooling water. Pull the drain plug!
- **DRY** the boat.
- **ALWAYS CONTACT** the destination state or province to understand the laws and regulations that jurisdiction has for boats coming from other states. To minimize travel delays and ensure compliance with state law, an inspection of your watercraft will be scheduled in your destination state.

An online map of regional watercraft inspection stations, and contact information for AIS coordinators in the western states and Canadian provinces is available at [www.westernais.org/moving-a-boat](http://www.westernais.org/moving-a-boat).



### Boat Auctioneers, Sellers and Brokers

Never sell a dirty boat. Period. When you do sell a boat, ensure you comply with the best management practices described in this brochure. Any boat you sell should be clean, drained, and dry so that the buyer does not unknowingly purchase, transport, and/or launch a dirty boat – and so that you help protect the boating industry, recreational opportunities, and your livelihood.

Do everything possible to ensure the individual that purchases the boat you auction, sell, or broker is aware of the information in this brochure. You have a vested interest in seeing that your boat buyer has a positive experience from the time he/she purchases a boat through to the time that boat launches in its destination waters.





IDAHO STATE LAW  
ALL  
WATERCRAFT  
MUST STOP

OPEN

